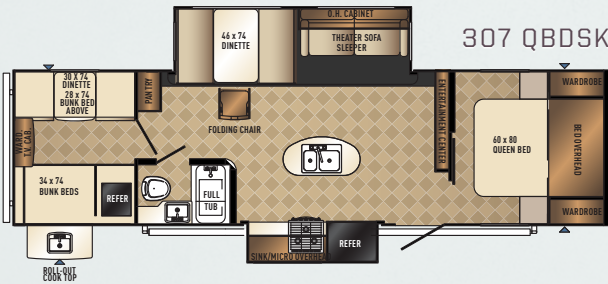
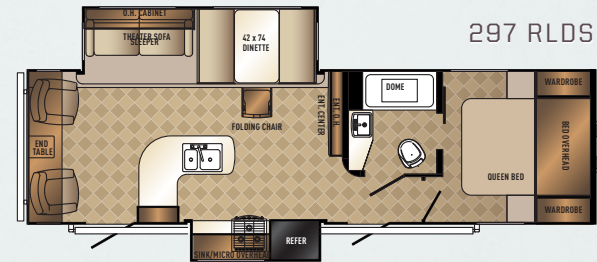
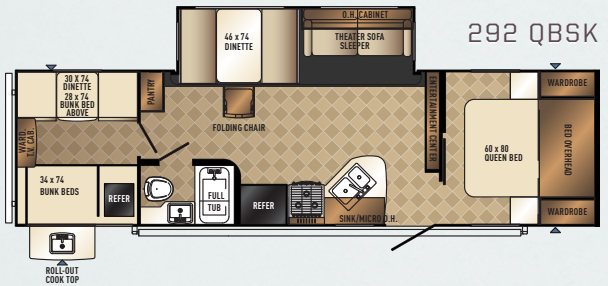
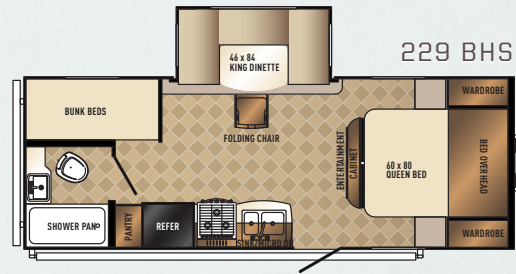
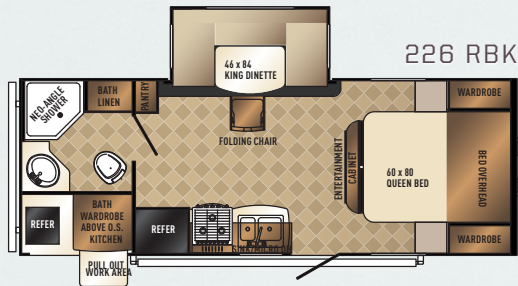


# SOLAIRE

PALOMINO RV



# SOLAIRE

PALOMINO RV

SUPERIOR FEATURES.

## TOP TEN REASONS TO BUY

1. Fully walkable - barreled ceilings
2. LED interior lights
3. Mocha infused or white exterior fiberglass
4. 6-sided vacuum bonded laminated construction
5. AL-KO® Independent suspension axles
6. Carefree® awning with LED lights
7. Tinted safety glass windows
8. Beau® Flor vinyl flooring
9. Laminated roof with ducted AC
10. Full welded aluminum super structure

## SOLAIRE ECLIPSE SPECIFICATIONS

	226 RBK	229 BHS	267 BHSK	269 BHDSK	292 QBSK	297 RLDS	307 QBDSK	317 BHSK
Hitch Dry Weight	710 LBS.	730 LBS.	885 LBS.	955 LBS.	780 LBS.	615 LBS.	835 LBS.	625 LBS.
Dry Axle Weight	4305 LBS.	3985 LBS.	4475 LBS.	4655 LBS.	4955 LBS.	5275 LBS.	5290 LBS.	6200 LBS.
Total Dry Weight	4991 LBS.	4691 LBS.	5290 LBS.	5590 LBS.	5683 LBS.	5773 LBS.	5960 LBS.	6726 LBS.
GVWR	7710 LBS.	7730 LBS.	7885 LBS.	8955 LBS.	7780 LBS.	8615 LBS.	8835 LBS.	8625 LBS.
Interior Height	6'6"	6'6"	6'6"	6'6"	6'6"	6'6"	6'6"	6'6"
Exterior Height	9'3"	9'3"	9'3"	9'3"	9'3"	9'3"	9'3"	9'3"
Exterior Width	8'	8'	8'	8'	8'	8'	8'	8'
Travel Length	25'10"	26'1"	30'11"	32'3"	33'3"	32'9"	33'11"	35'1"
Fresh Water Capacity	32 GALS.	32 GALS.	32 GALS.	32 GALS.	32 GALS.	32 GALS.	32 GALS.	32 GALS.
Gray Water Capacity	76 GALS.	76 GALS.	76 GALS.	76 GALS.	38 GALS.	76 GALS.	38 GALS.	76 GALS.
Black Water Capacity	30 GALS.	30 GALS.	38 GALS.	38 GALS.	38 GALS.	30 GALS.	38 GALS.	30 GALS.
Cargo Carrying Capacity	2661 LBS.	2981 LBS.	2491 LBS.	3311 LBS.	2011 LBS.	2691 LBS.	2676 LBS.	1766 LBS.

## ECLIPSE PACKAGE INCLUDES

1. Residential Style Wood Valances
2. Fiberglass Front Cap w/ LED Lights and Line X® Rock Guard
3. Power Stabilizer Jack Pack (Includes Hitch)
4. Frameless Windows
5. Serta® Trump Metropolitan Mattress
6. Solid Surface Countertops
7. Aluminum Wheels

SOLAIRE ECLIPSE DEALER



**Learn More**  
Scan this barcode using a QR Reader on your smart phone to learn more about Forest River.



A Berkshire Hathaway company.



### PALOMINO RV

1047 East M-86 | Colon, MI 49040  
P: 269.432.3271 | F: 269.32.2516  
[www.palominorv.com](http://www.palominorv.com)

All illustrations and specifications contained in this literature are based on the latest product information at time of publication. Forest River, Inc. reserves the right to make changes in prices, colors, materials, equipment and specifications at anytime without notice and assumes no responsibility for any error in this literature. All weights shown are approximate. All units are shipped F.O.B. point of manufacture. CONSULT YOUR LOCAL DEALER FOR WARRANTY INFORMATION. Litho U.S.A. 2012.08.31 FOR 0998