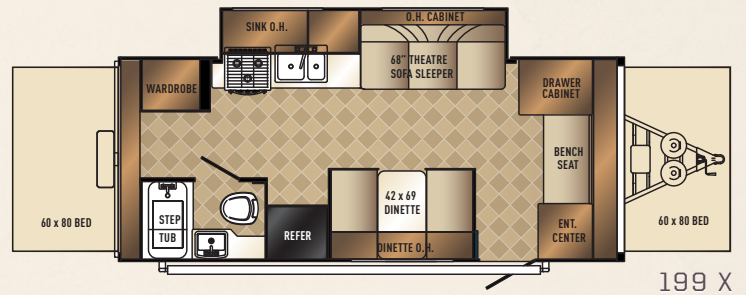
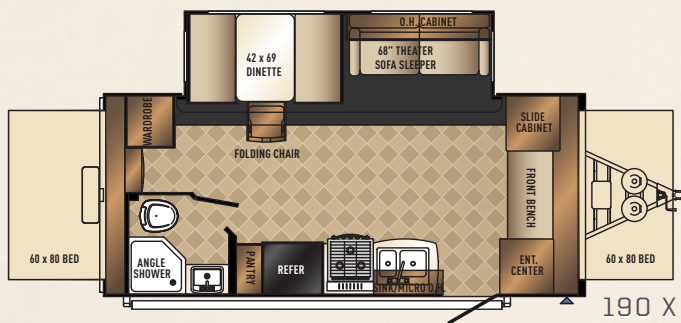
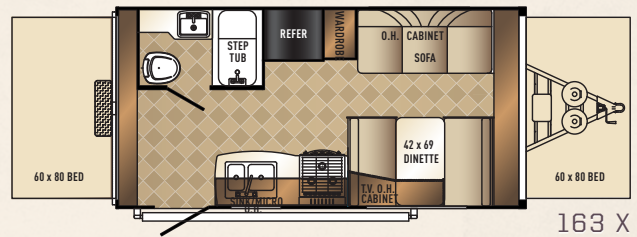
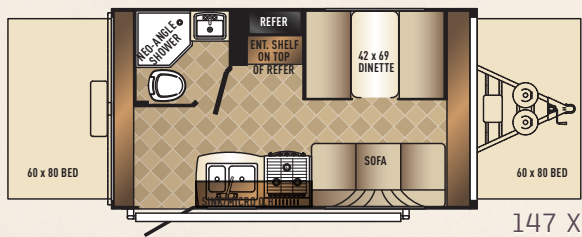


SOLAIRE

PALOMINO RV

EXPANDABLES



SOLAIRE

PALOMINO RV

EXPANDABLES

SUPERIOR FEATURES.

TOP TEN REASONS TO BUY

1. Super max child safety flap
2. Fully walkable roof w/ducted AC vents
3. LED interior lights
4. AL-KO Torsion Axle
5. 6-sided vacuum bonded laminated construction
6. Mocha and White exterior fiberglass available
7. 5 year tent warranty
8. Beau® Flor throughout
9. Carefree® awning w/ LED lights - Standard
10. 7 string weaved air craft grade bed support cables (rated for 1200 lbs.)

SOLAIRE EXPANDABLES SPECIFICATIONS

	147 X	163 X	190 X	199 X	213 X
Hitch Dry Weight	315 LBS.	400 LBS.	620 LBS.	485 LBS.	605 LBS.
Dry Axle Weight	2720 LBS.	3060 LBS.	3990 LBS.	3880 LBS.	3675 LBS.
Total Dry Weight	3011 LBS.	3392 LBS.	4622 LBS.	4297 LBS.	4280 LBS.
GVWR	3815 LBS.	7400 LBS.	7620 LBS.	7485 LBS.	7605 LBS.
Interior Height	6'6"	6'6"	6'6"	6'6"	6'6"
Exterior Height	9'3"	9'3"	9'3"	9'3"	9'3"
Exterior Width	8'	8'	8'	8'	8'
Travel Length	18'6"	20'2"	22'10"	23'8"	25'2"
Fresh Water Capacity	32 GALS	32 GALS	32 GALS	32 GALS	32 GALS
Gray Water Capacity	30 GALS	30 GALS	30 GALS	60 GALS	30 GALS
Black Water Capacity	30 GALS.	30 GALS	30 GALS	30 GALS	30 GALS
Cargo Carrying Capacity	746 LBS.	3906 LBS.	2976 LBS.	3086 LBS.	3291 LBS.

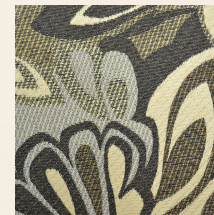
SOLAIRE EXPANDABLES INTERIOR OPTIONS



Chestnut



Heather



Indigo



Toffee

SOLAIRE EXPANDABLES DEALER



Learn More
Scan this barcode using a QR Reader on your smart phone to learn more about Forest River.



A Berkshire Hathaway company.



PALOMINO RV

1047 East M-86 | Colon, MI 49040

P: 269.432.3271 | F: 269.32.2516

www.palominorv.com

All illustrations and specifications contained in this literature are based on the latest product information at time of publication. Forest River, Inc. reserves the right to make changes in prices, colors, materials, equipment and specifications at anytime without notice and assumes no responsibility for any error in this literature. All weights shown are approximate. All units are shipped F.O.B. point of manufacture. CONSULT YOUR LOCAL DEALER FOR WARRANTY INFORMATION. Litho U.S.A. 2012.08.31 FOR 0998